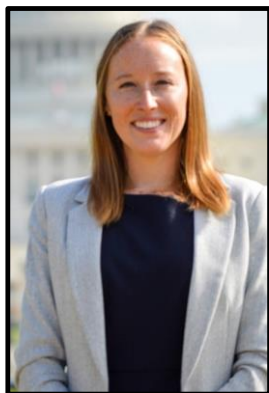


Marine Debris in the Mid-Atlantic: Ongoing Efforts to Address a Global Challenge



Featured Speaker:

Katie Morgan

Mid-Atlantic Regional Coordinator

NOAA Marine Debris Program/Lynker Technologies

marinedebris.noaa.gov



Our oceans are filled with items that do not belong there as consumer plastics, metals, rubber, paper, textiles, derelict fishing gear, vessels, and other lost or discarded items enter the marine environment every day. This marine debris is one of the most widespread pollution problems facing the world's ocean and waterways, impacting people, ecosystems, and our economy. While the problem may seem large, it is important to remember that marine debris is preventable. Join us to learn more about the issue of marine debris and what is being done at multiple scales to address this pervasive global issue.

Thursday, June 30, 2022

6:30 – 8:00 PM

**Free Zoom webinar open to all
who are interested!**

**Please register at the following link
by June 27:**

<http://go.rutgers.edu/eatjnrfn>

For more information, please contact us:

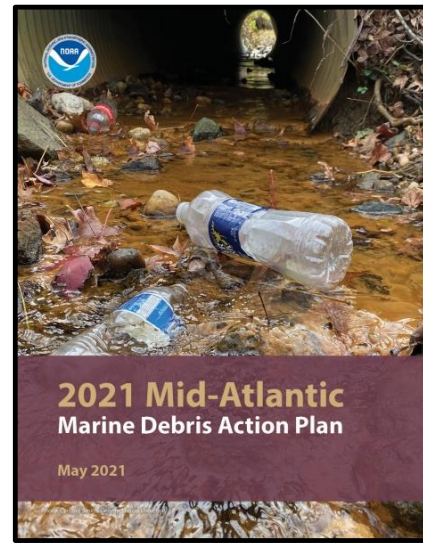
Dr. Douglas Zemeckis (Rutgers Cooperative Extension)
zemeckis@njaes.rutgers.edu, 732-349-1152

Dr. Steve Yergeau (Rutgers Cooperative Extension)
yergeau@njaes.rutgers.edu, 732-505-3671

Kelly Jurgensen (RCE Ocean County)
kjurgensen@co.ocean.nj.us, 732-349-1152

Rutgers Cooperative Extension is an equal opportunity program provider and employer. Contact your local Extension Office for information regarding special needs or accommodations. Contact the State Extension Director's Office if you have concerns related to discrimination, 848-932-3703.

Cooperating Agencies: Rutgers, The State University of New Jersey, U.S. Department of Agriculture, and Boards of County Commissioners. Rutgers Cooperative Extension, a unit of the Rutgers New Jersey Agricultural Experiment Station, is an equal opportunity program provider and employer.



Scan here

[Access Plan Here](#)