



BUILDING A BUTTERFLY GARDEN

**Rutgers Cooperative Extension
 of Ocean County**

1623 Whitesville Road
 Toms River, NJ 08755
 Phone (732) 349-1246

For Additional Information:

Visit our web site at:

<http://ocean.njaes.rutgers.edu>

OR

- Rutgers Fact Sheets:
www.njaes.rutgers.edu/pubs
- Monarch Waystation Program:
www.monarchwatch.org/waystations
- North American Butterfly Association:
www.naba.org
- Blooms for Bees: How to Provide Pollen and Nectar Sources,
<https://njaes.rutgers.edu/fs1222/>
- Gardening for Butterflies:
<https://extension.psu.edu/gardening-for-butterflies>
- How to Make a Puddler:
 Call (732) 349-1246 for More Information



Cooperating Agencies: Rutgers, missioners. The State University of New Jersey, U.S. Department of Agriculture, and Boards of County Rutgers Cooperative Extension, a unit of the Rutgers New Jersey Agricultural Experiment Station, is an equal opportunity program provider and employer.

Rutgers Cooperative Extension is an equal opportunity program provider and employer. Contact your local Extension Office for information regarding special needs or accommodations. Contact the State Extension Director's Office if you have concerns related to discrimination 848-932-3703.

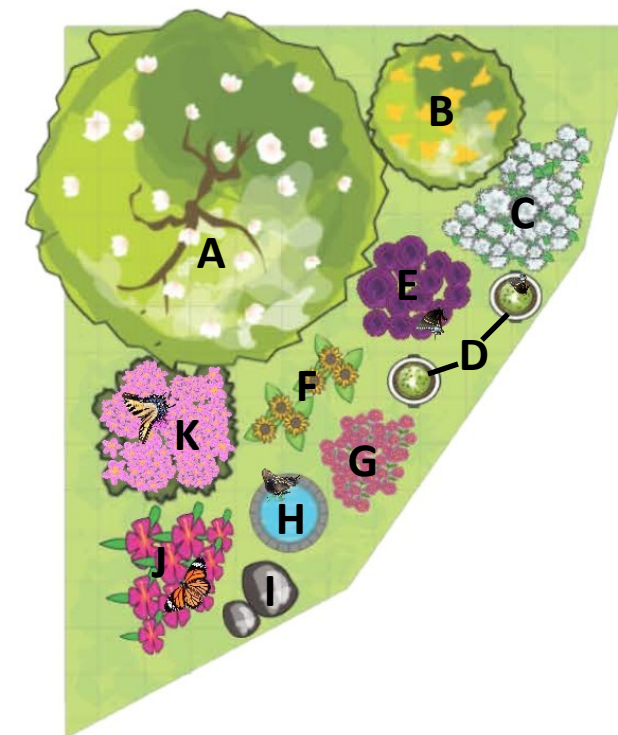
Building a Butterfly Garden

- Identify what butterflies are specific to your area
- Choose host plants for caterpillars and nectar plants for butterflies
- Provide a variety of short and tall flat top plants
- Provide a shallow water source such as a puddler or bird bath
- Include large rocks that warm quickly
- Provide shelter in the form of a flowering bush.
- Avoid using pesticides



Puddlers

Sample Garden



- | | |
|-------------------------|--------------------|
| A Tulip tree | G Swamp Milkweed |
| B Spicebush | H Puddler |
| C Queen Anne's Lace | I Sunbathing Rocks |
| D Planters with Parsley | J Coneflower |
| E Phlox | K Azaleas |
| F Mexican Sunflower | |

Monarch Butterflies

Host Plants:

Swamp Milkweed *Asclepias incarnata*



Full/Partial Sun
4-5 ft High
2-3 ft Spread
Blooms in the Summer

Butterfly Milkweed *Asclepias tuberosa*



Full Sun
1.5-3 ft High
1-2 ft Spread
Blooms in Late Spring—
Summer

Nectar Plants:

Coneflower *Echinacea* spp.



Full/Partial Sun
2-4 ft High
1.5-2 ft Spread
Blooms in the Summer

Asters *Aster* spp.



Full/Partial Sun
2.5-6 ft High
2-3 ft Spread
Blooms in Late Summer—
Fall



Eastern Tiger Swallowtail Butterflies

Host Plants:

Birch Trees *Betula* spp.



Full/Partial Sun
50-75 ft High
35-45 ft Spread
Blooms in the Spring

Tuliptree *Liriodendron tulipifera*



Full Sun
60-90 ft High
30-50 ft Spread
Blooms in Late Spring—Early
Summer

Nectar Plants:

Mexican Sunflower *Tithonia rotundifolia*



Full/Partial Sun
4-6 ft High
4 ft Spread
Blooms in Mid Summer— Fall

Azaleas *Rhododendron* spp.



Full Sun to Full Shade
4-8 ft High
4-8 ft Spread
Blooms in the Spring



Spicebush Swallowtail Butterflies

Host Plants:

Spicebush *Lindera benzoin*



Full Sun to Full Shade
6-12 ft High
6-12 ft Spread
Blooms in the Spring

Sassafras *Sassafras albidum*



Full/Partial Sun
30-60 ft High
25-40 ft Spread
Blooms in Spring—Early
Summer

Nectar Plants:

Lantana *Lantana* spp.



Full/Partial Sun
3-4 ft High
1-3 ft Spread
Blooms Summer —Fall

Pentas *Pentas lanceolata*



Full/Partial Sun
1-2 ft High
1-2 ft Spread
Blooms Summer —Fall



Black Swallowtail Butterflies

New Jersey State Butterfly

Host Plants:

Queen Anne's Lace *Daucus carota*



Full/Partial Sun
1-2 ft High
Reseeds Easily
Blooms in the Summer

Parsley *Petroselinum crispum*



Full/Partial Sun
0.75-1 ft High
0.75-1 ft Spread
Blooms Summer—Fall

Nectar Plants:

Phlox *Phlox* spp.



Full/Partial Sun
2-4 ft High
2-4 ft Spread
Blooms in the Summer

Zinnia *Zinnia elegans*



Full Sun
1-4 ft High
6"-2 ft Spread
Blooms Summer—Fall

